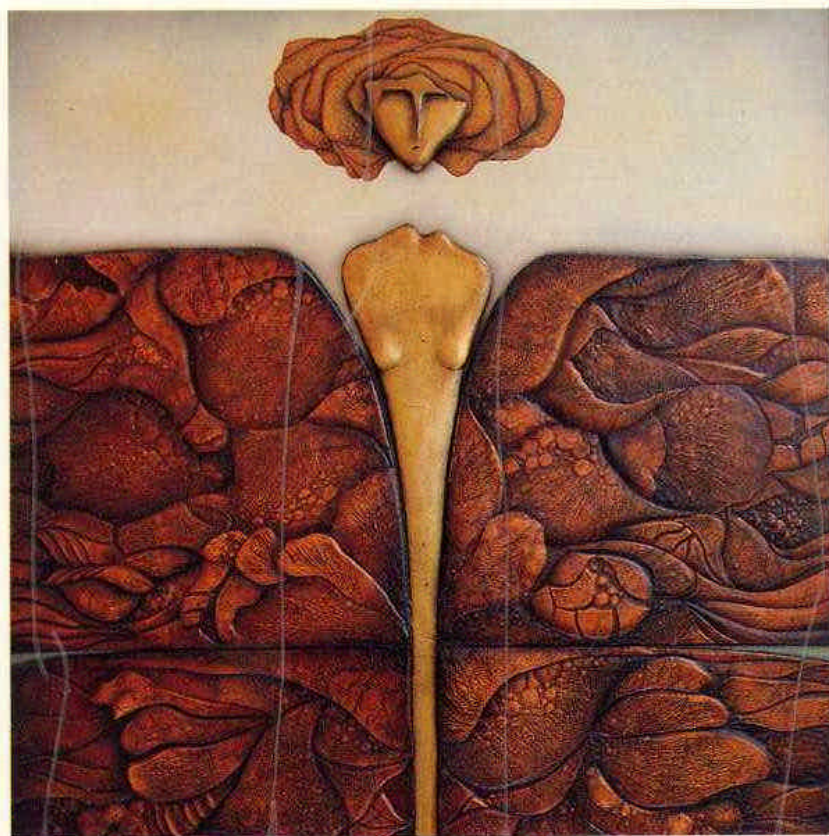


Dimensions

DESIGN FOR HOMES □ OFFICES □ PUBLIC PLACES

OCTOBER 1991 □ HK\$30



CHRYSALIS NO MORE

Photography: Clive Cheung FOTD ALPHA

For hotelier Gerd Koidl and wife Fiona Campbell, art is a way of life. And what better way to live art, suggests **Penny Forster**, than to immerse yourself in it, in that most intimate of environmental spaces — the home?

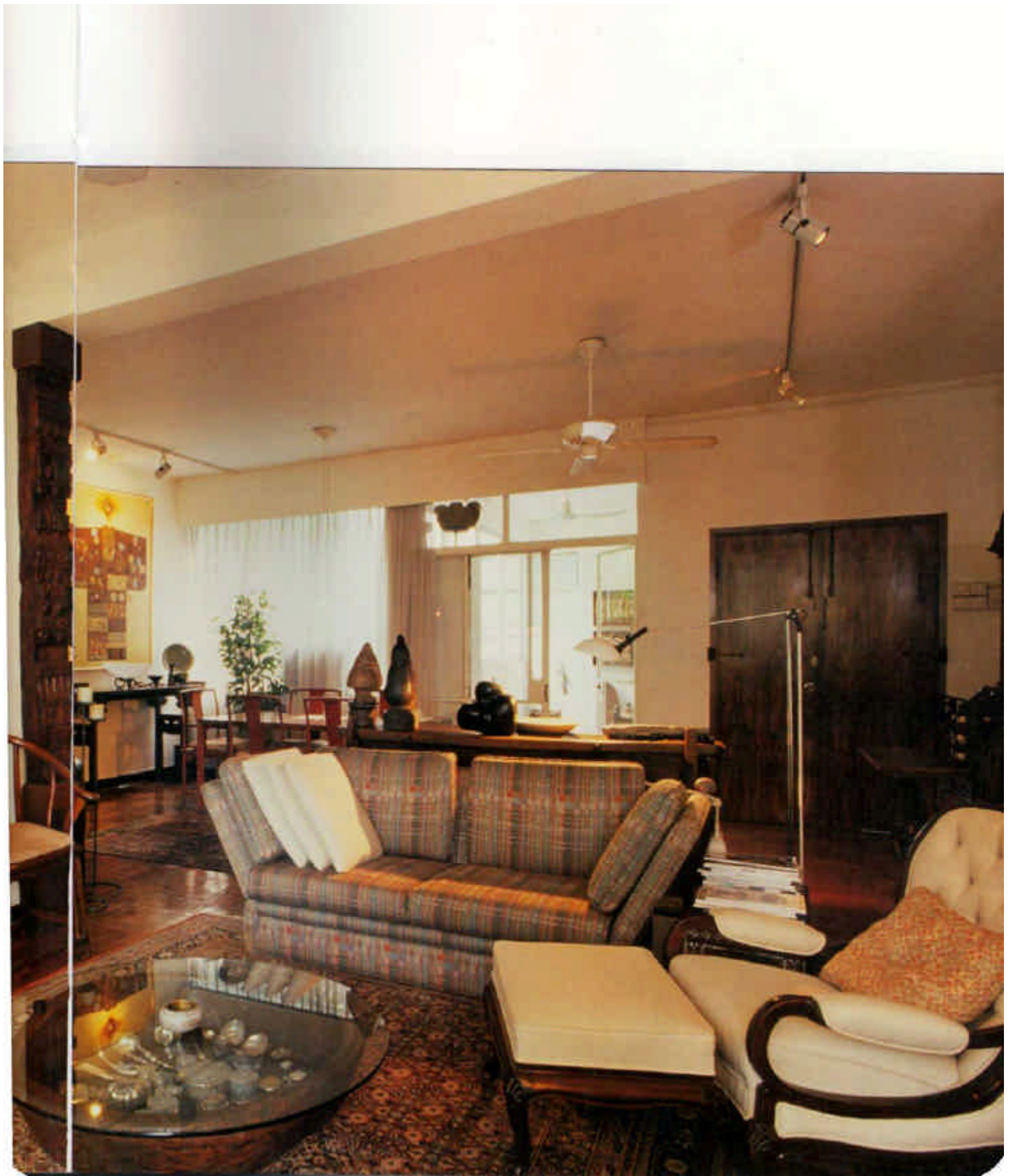
There was a time when Gerd Koidl kept his artistic talents under wraps, a chrysalis ready to take wing. But working with the Hyatt chain, which promotes local artists and invests heavily in art, has been a liberating experience.

Today, his works make up the bulk of the objets d'art on display in his Pokfulam home. Carefully constructed images with a multiplicity of meaning, their principal theme is one of rebirth and regeneration, which

The living room, looking on towards the dining area. Carved wooden column from Afghanistan adds definition to the wall at left, while sculptured head (by Koidl) with one green marble eye gazes benignly from its position atop a Korean chest.

Hotelier/artist Gerd Koidl comes from a long line of artists.



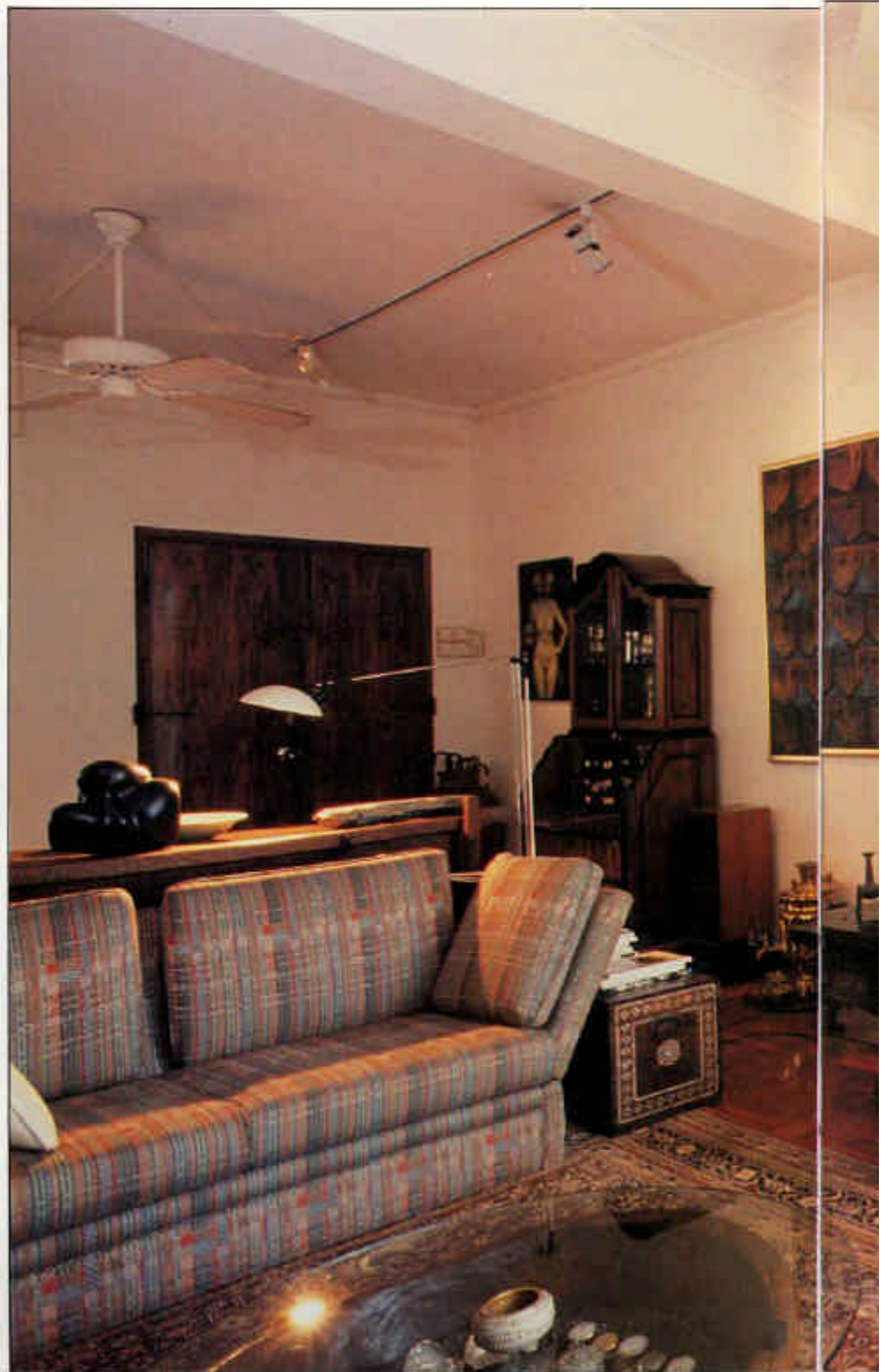


THE KOIDLS' HOME

symbolize, for Koidl, the dichotomy of the human person. Consisting of some sculpture and a wealth of paintings depicting butterflies — beautiful and transitory, which he has been painting most of his life — they share wall and surface space in an apartment located within an old building.

Having resided in a hotel longer than they have in a home of their own, the Koidls have amassed a considerable collection of artefacts, a memento of years spent living and travelling around the region. Together with Koidl's paintings and sculpture they, alone, convey the decorating statement in the apartment which the Koidls studiously left bare of structural alterations to serve as a backdrop for their collection of treasured objects, and his art. □

Section of the living area with a selection of Koidl's abstract and surrealist works on the wall. Reconditioned chaise longue were rescued from the old Repulse Bay hotel.





The dining area. An eclectic melange of furnishings from Hong Kong, Afghanistan, and Sri Lanka with bailast jars from Thailand, a trio of Philippine santos figures, and a collection of netsuke mounted on a display panel against the wall. More Koidl paintings fill up the far wall.



Master bedroom. Painted relief is a trompe l'oeil kimono in the style of Royal Ogata kimonos, and an example of Koidl's technique, employing special collage materials such as clay, gesso, aluminium foil, cast paper and gold leaf to give an exciting textured effect.



Kiss of Life, (above left)
Robirth (above)
Self-imprisonment (left)

THE LESS IS TRULY MORE

